

PN: w/3.8kw x 6P motor
156577 380V50Hz

PN: w/5.5kw x 4P motor
150009 380V50Hz 158322 380V50Hz
151415 380V50Hz 158762 415V50Hz
152860 440V50Hz 931505 400V50Hz

Introduction

► Feature

- Lifting capacity: 2,200 kg at 50Hz wire rope top layer
- Lifting height: 97 m
- Lifting speed: 4P: 6.9-12.6 m/min at 50Hz ; 6P: 4.5-8.3 m/min at 50Hz
- Brake: Electromagnetic spring-applied failsafe brake
- Control: Pendant switch powers the winch

► Unpacking

- Winch assembly 1pc
- Wire rope 16 mm x 100 m w/safety hook except for PN:150009 1pc
- Wire rope 14 mm x 150 m w/safety hook for PN:151415 1pc
- Low voltage control ass'y LV-320 1pc
- Pendant switch CPB-161 w/cord 1.25 mm² x 3C x 3 m 1pc
- **Pendant switch CPB-161 w/cord 1.25 mm² x 3C x 6 m for PN 931505 1pc**

► Read this manual carefully

You should carefully read and understand this manual before operating it. Careless winch operation may result in personal injury hazards or property damage.

► Information requesting or parts ordering

Please specify the followings information:

- Winch PN
- Serial number
- Part description
- Replacement part number
- Quantity for each part

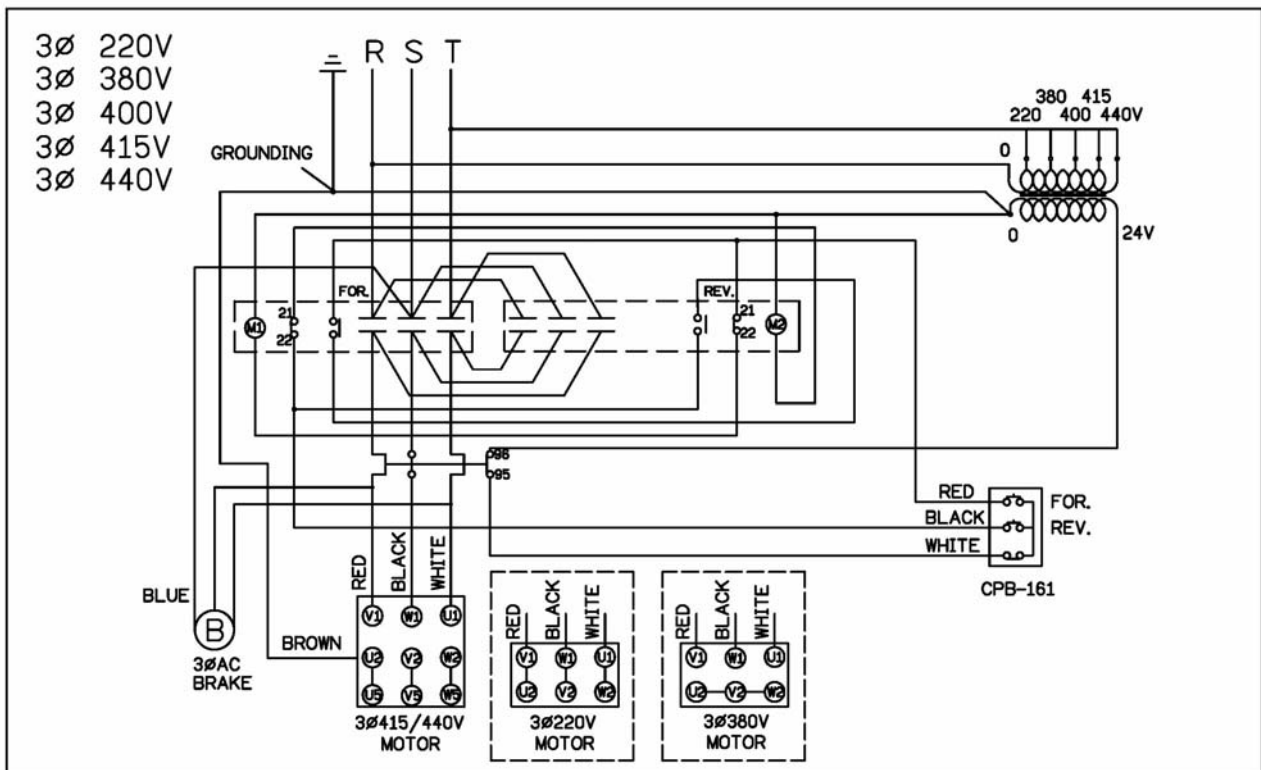
Installation

Before using the winch, make sure all electrical components have no corrosion or damaged; the environment should be clear and dry.

► Performance

Winch Model			CWG-30750								
Motor	kwxp		5.5 x 4			3.8 x 6					
Recommended Wire Rope	Size(mm)		16								
	Breaking (kg)		11,900								
1 st Layer	Rated Load (kg)	50Hz	4,014	Rated Load (kg)	50Hz	3,446	Rated Load (Kg)	50Hz	3,019		
		60Hz	3,211		60Hz	2,756		60Hz	2,415		
	Speed (m/min)	50Hz	6.9	Speed (m/min)	50Hz	8.1	Speed (M/min)	50Hz	9.2		
		60Hz	4.5		60Hz	5.3		60Hz	6		
Rope-Winding Cumulating Sum (m)			11	Rope-Winding Cumulating			24	Rope-Winding Cumulating Sum (m)			39
4 th Layer	Rated Load (kg)	50Hz	2,686	Rated Load (kg)	50Hz	2,419	Rated Load (kg)	50Hz	2,200		
		60Hz	2,148		60Hz	1,935		60Hz	1,760		
	Speed (m/min)	50Hz	10.4	Speed (m/min)	50Hz	11.5	Speed (m/min)	50Hz	12.6		
		60Hz	6.8		60Hz	7.5		60Hz	8.3		
Rope-Winding Cumulating Sum (m)			56	Rope-Winding Cumulating Sum (m)			75	Rope-Winding Cumulating Sum (m)			100
Rope-Winding Cumulating Sum (m)			56	Rope-Winding Cumulating Sum (m)			75	Rope-Winding Cumulating Sum (m)			100

► Wiring Diagram



Warning

- The winch is not intended to be used in any manner for the movement or lifting of personnel.
- The lifting capacity shown is based on the top layer of rope on the drum.
- The rope winding on the drum shall remain 5 wraps from the drum.

Parts List

Item No.	Description	Part No.	Qty
1	Motor kit	As arranged	1
2	Motor support rack kit	880610	1
3	Drum kit	880611	1
4	Connect shaft kit	880612	1
5	Tie bar kit	880613	4
6	Gearbox support rack kit	880614	1
7	3 rd stage carrier kit	880616	1
8	2 nd stage carrier kit	880618	1
9	2 nd & 3 rd ring gear kit	880619	1
10	Fix plate kit	880620	1
11	1 st stage carrier kit	880622	1
12	1 st ring gear kit	880623	1
13	1 st shaft kit	880624	1
14	Brake base kit	881638	1
15	Brake kit	As arranged	1
15-1	Brake disc	880626	2
15-2	Brake coil	As arranged	1
16	Brake rear cover kit	880627	1
17	Wire rope w/hook	880628	1
	Wire rope w/hook for PN:151415	882165	1
18	Low voltage control ass'y LV-320	As arranged	1
18-1	Remote control,CPB-161	881047	1
	Remote control,CPB-161 for PN 931505 (1.25 mm ² x 3C x 6 m)	882386	1
19	Base plate kit	881637	1

Part No. configurations:

Cycle	Voltage	kw x p	Motor	kw x p	Motor
50 Hz	380 V	5.5 x 4	880637	3.8 x 6	880641
50 HZ	400 V	5.5 x 4	881448		
50 Hz	415 V	5.5 x 4	880638		
50 Hz	440 V	5.5 x 4	880636		

Cycle	Voltage	Brake kit	Brake coil	LV-320
50 Hz	380 V	881640	880648	881826
50 Hz	400 V	881641	881450	882385
50 Hz	415 V	881642	880649	881831
50 Hz	440 V	881643	880650	882055

Standard Value for brake coil (50Hz):

Voltage	220V	380V	400V	415V	440V
Black & Blue	28 Ω	108 Ω	90 Ω	117 Ω	126 Ω
Black & Red	12 Ω	48 Ω	40 Ω	52 Ω	56 Ω
Red & Blue	15 Ω	54 Ω	50 Ω	62 Ω	70 Ω

Winch Assembly

