

## **Introduction**

### **► Feature**

- Lifting capacity: 750 kg wire rope top layer
- Lifting height: 58 m
- Lifting speed: 10-15 m/min at 50Hz
- Brake: Electromagnetic spring-applied failsafe brake
- Control: Pendant switch powers the winch

### **► Unpacking**

- Winch assembly 1pc
- Wire rope 9 mm x 60 m w/hook 1pc
- Low voltage control ass'y LV-320 1pc
- Pendant switch PB-306 w/cord 1.25 mm<sup>2</sup> x 3C x 3 m 1pc

### **► Read this manual carefully**

You should carefully read and understand this manual before operating it. Careless winch operation may result in personal injury hazards or property damage.

### **► Information requesting or parts ordering**

Please specify the followings information:

- Winch PN
- Serial number
- Part description
- Replacement part number
- Quantity for each part

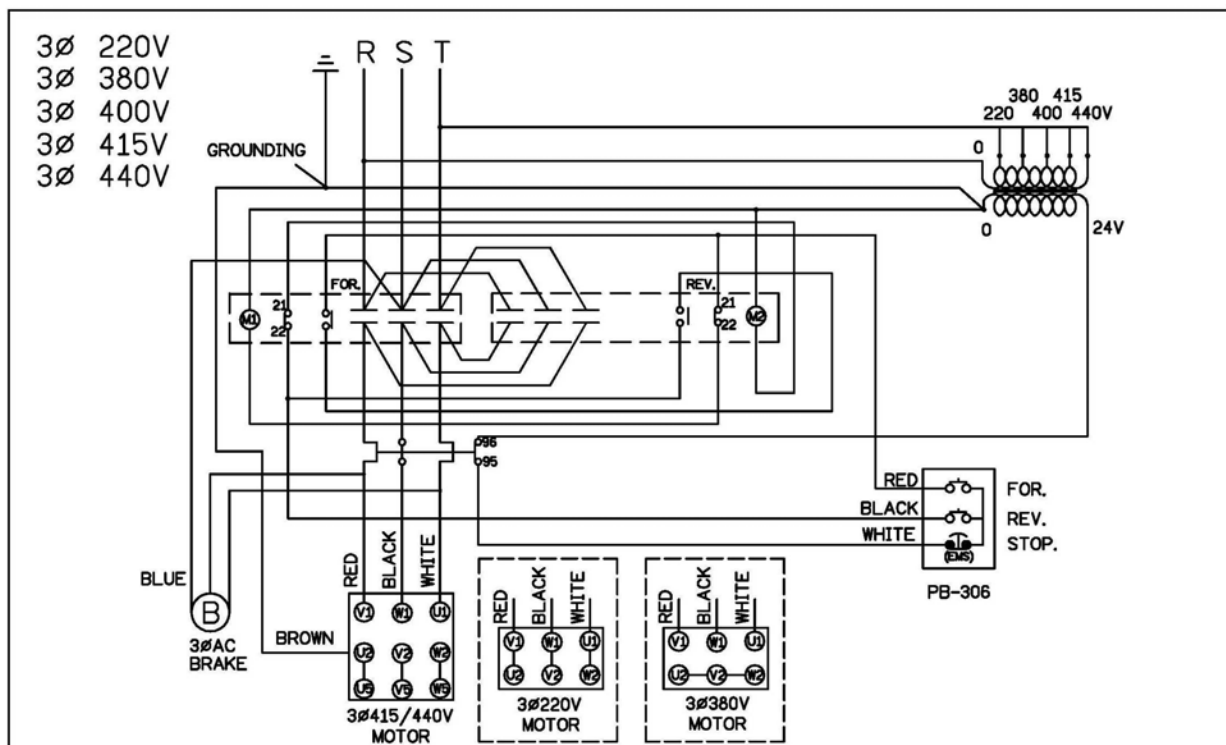
# Installation

Before using the winch, make sure all electrical components have no corrosion or damaged; the environment should be clear and dry.

## ► Performance

| Winch Model           |                                 |      | CP-750T |                       |                                 |      |       |                       |                                 |      |      |
|-----------------------|---------------------------------|------|---------|-----------------------|---------------------------------|------|-------|-----------------------|---------------------------------|------|------|
| Motor                 | kw x p                          |      | 2.2 x 4 |                       |                                 |      |       |                       |                                 |      |      |
| Recommend Wire Rope   | Size (mm)                       |      | 9       |                       |                                 |      |       |                       |                                 |      |      |
|                       | Breaking (kg)                   |      | 3,750   |                       |                                 |      |       |                       |                                 |      |      |
| 1 <sup>st</sup> Layer | Rated Load (kg)                 | 50Hz | 1,188   | 2 <sup>nd</sup> Layer | Rated Load (kg)                 | 50Hz | 1,036 | 3 <sup>rd</sup> Layer | Rated Load (kg)                 | 50Hz | 920  |
|                       | Speed (m/min)                   | 50Hz | 10      |                       | Speed (m/min)                   | 50Hz | 11.0  |                       | Speed (m/min)                   | 50Hz | 12.4 |
|                       | Rope-Winding Cumulating Sum (m) |      | 9.9     |                       | Rope-Winding Cumulating Sum (m) |      | 21.3  |                       | Rope-Winding Cumulating Sum (m) |      | 34.2 |
| 4 <sup>th</sup> Layer | Rated Load (kg)                 | 50Hz | 826     | 5 <sup>th</sup> Layer | Rated Load (kg)                 | 50Hz | 750   |                       |                                 |      |      |
|                       | Speed (m/min)                   | 50Hz | 13.8    |                       | Speed (m/min)                   | 50Hz | 15    |                       |                                 |      |      |
|                       | Rope-Winding Cumulating Sum (m) |      | 48.5    |                       | Rope-Winding Cumulating Sum (m) |      | 60    |                       |                                 |      |      |

## ► Wiring Diagram



## Warning

- The winch is not intended to be used in any manner for the movement or lifting of personnel.
- The lifting capacity shown is based on the top layer of rope on the drum.
- The rope winding on the drum shall remain 5 wraps from the drum.

# Parts List

| Item No. | Description                           | Part No. | Qty |
|----------|---------------------------------------|----------|-----|
| 1        | Induction motor kit                   | 880917   | 1   |
| 2        | Motor support rack kit                | 881031   | 1   |
| 3        | Drum kit                              | 881032   | 1   |
| 4        | Connect shaft kit                     | 881033   | 1   |
| 5        | Tie bar kit                           | 881034   | 2   |
| 6        | Gearbox support rack kit              | 881035   | 1   |
| 7        | 2 <sup>nd</sup> stage carrier kit     | 880907   | 1   |
| 8        | 1 <sup>st</sup> stage carrier kit     | 880909   | 1   |
| 9        | Gear box kit                          | 880910   | 1   |
| 10       | 1 <sup>st</sup> shaft kit             | 880911   | 1   |
| 11       | Gearbox rear cover kit                | 880912   | 1   |
| 12       | Brake kit 380V                        | 881257   | 1   |
| 12-1     | Brake disc                            | 880919   | 1   |
| 12-2     | Brake coil 380V                       | 880924   | 1   |
| 13       | Brake rear cover kit                  | 881130   | 1   |
| 14       | Wire rope w/hook 9 mm x 60 m          | 881131   | 1   |
| 15       | Low voltage control ass'y LV-320,380V | 881821   | 1   |
| 15-1     | Remote control, PB-306                | 881048   | 1   |
| 16       | Base plate kit                        | 880914   | 1   |

# Winch Assembly

